

**STAHLY ENGINEERING & ASSOCIATES**  
Professional Engineers  
& Surveyors

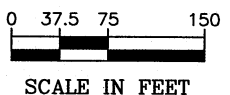
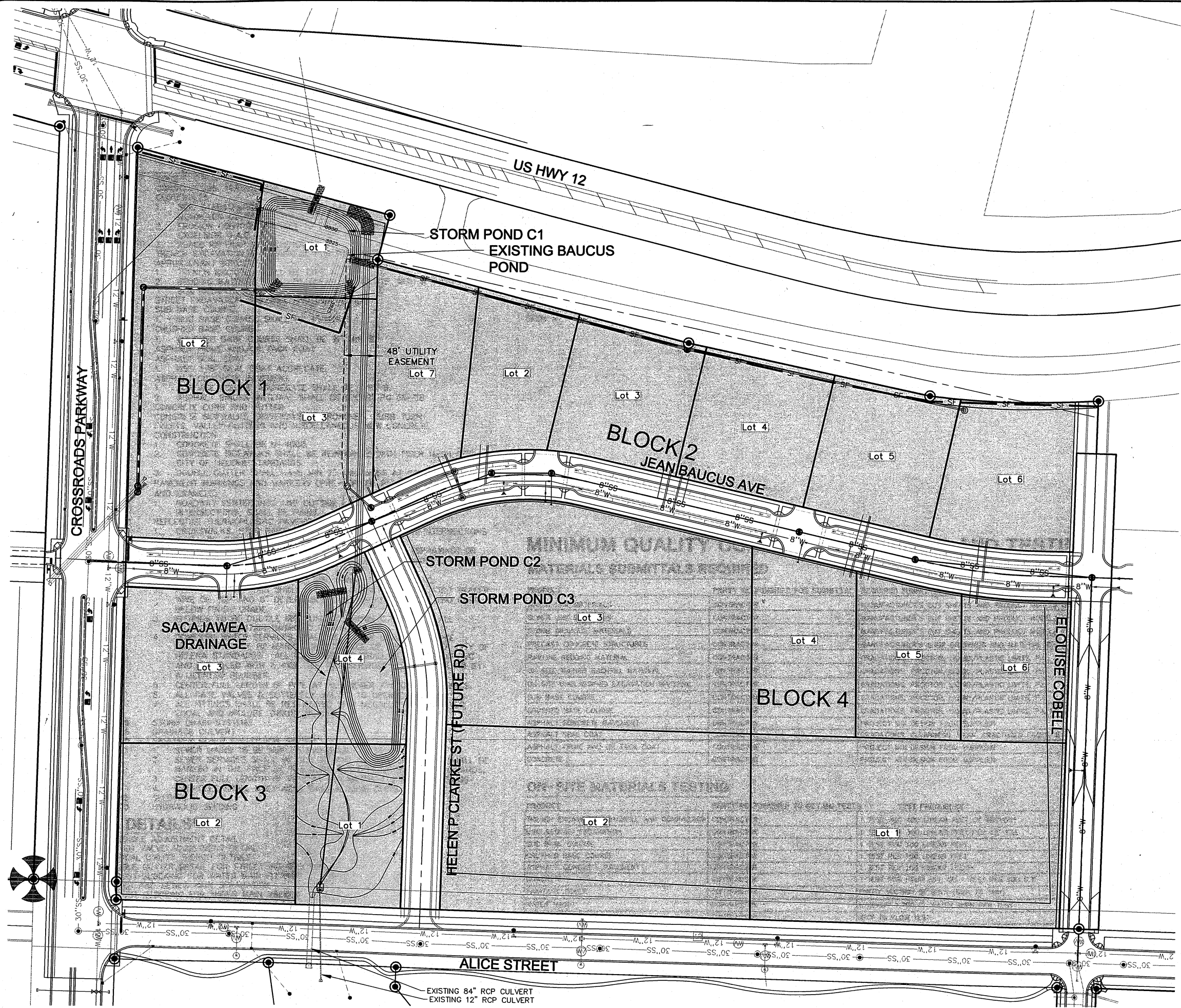
7585 Shedhorn Drive  
Bozeman, MT 59718  
Phone: (406) 522-9526  
Fax: (406) 522-9526  
E-MAIL: [stahlyengr@mt.net](mailto:stahlyengr@mt.net)

9/26/2013 9:35 AM

**SITE IMPROVEMENTS PLAN**  
COMMERCIAL PHASE II  
CROSSROADS AT MOUNTAIN VIEW MEADOWS  
CITY OF HELENA PROJECT #13-22

DESIGNED: JLS  
DRAWN: BCM  
CHECKED: BCS  
DATE: 9-23-13

SHEET  
G1.1



**LEGEND**

- NEW HYDRANT
- EXISTING HYDRANT
- 8" W NEW WATER
- 12" W EXISTING WATER
- 8" SS NEW SEWER
- 30" SS NEW SEWER SERVICE
- 30" SS EXISTING SEWER
- NEW CULVERT WITH DROP INLET AND F.E.T.
- EXISTING CULVERT
- BMP-SILT FENCE OR FIBER ROLLS
- B-2 COMMERCIAL PROPERTY
- CURRENT B-2 PROPERTY, TO BE CONVERTED TO GREENSPACE

N:\1706-02212 COMM PHASE II\DWG\PLAN SETS\CONSTRUCTION DRAWINGS\1706-022 SITE IMPROVEMENTS PLAN.dwg